


# FLOS

 F4640019 Yellow

**OK**

Designed by Konstantin Grcic, 2014

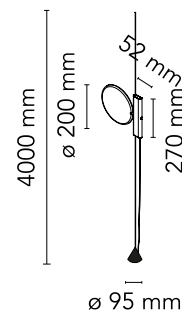
18W - 1551lm - 2700K



Lamp providing direct light. Head in gloss varnished. Body in injection-stamped PA66+30%FV with cover in gloss varnished. Orientable head. The light fitting can be moved vertically by running the internal structure of the body on a steel cable tensioned between the ceiling and the floor (useful length 4000mm). Dimmable switch with Soft Touch technology. Adaptor on plug connector with interchangeable plugs.

Are you a professional and your project needs consulting and support?

[BOOK AN APPOINTMENT](#)






## Main specifications

EAN	8059607020128
Mounting	Suspension
Environments	Indoor dry location
Light Source Type	LED
LED type	LED Module
Power (W)	18
System flux (lm)	1551

## Physical

Colour	Yellow
Length (mm)	200
Cord length (mm)	4000
Net weight (kg)	2.9
Package height (mm)	140
Package width (mm)	340
Package length (mm)	390
Package volume (m3)	0.02
IP internal	20

## Download

- [Mounting instructions](#)  PDF
- [Mounting instructions](#)  PDF
- [Spare Parts](#)  PDF

## Photometric Files

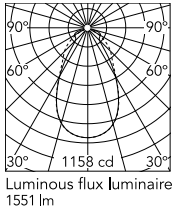
- [LDT / IES](#)  LDT

## Technical Drawings

- [2D](#)  ZIP
- [3D](#)  ZIP



## Schematic light drawing



## Photometric

Lighting type	Direct
Light distribution	Symmetric
CCT (K)	2700

## Electrical

Insulation class	III
Frequency (Hz)	50/60
Main voltage (Vac)	100-240/24
LED voltage Vf (Vdc)	null
Driver	Remote included
Dimmable	Yes
Dimming type	Electronic 24V
Dimming interface	Dimmer Integrated
Plug type	Type G, Type A, Type C
Batteries inside	No

## Ecodesign and Energy Labelling

This product contains a light source of energy efficiency class F

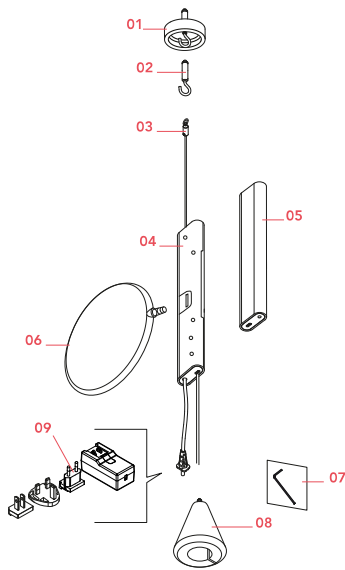


Replaceable (LED only) light source by a professional



Replaceable control gear by an end-user

## Spare Parts



01.	Yellow ceiling rose	RF23031
02.	Anchor with hook	RF4640100
03.	Steel cable 4mt.	RF4640200
03.	Steel cable 6mt.	RF4640300
04.	Internal lamp body assembly	RF4640400
05.	Yellow extrusion	RF22997
06.	Yellow led head assembly	RF28255
07.	Hex Key 2mm for OK lamp	RF06850
08.	Counterweight	RF23023
09.	Black plug assembly kit & 24V driver	RF3320100

**DOWNLOAD**



RF23031  
Yellow ceiling rose



RF4640100  
Anchor with hook



RF4640200  
Steel cable 4mt.



RF4640300  
Steel cable 6mt.



RF4640400  
Internal lamp body assembly



RF22997  
Yellow extrusion



RF28255  
Yellow led head assembly



RF06850  
Hex Key 2mm for OK lamp



RF23023

Counterweight



RF3320100

Black plug assembly kit & 24V driver