



LIMITED EDITION

## TECHNICAL DETAILS



Category  
Unique



Total weight  
4.5 kg/m<sup>2</sup>  
0.92 lb/sq.ft.



Total thickness  
18 mm  
0.7"



Maximum sizes  
485 x 990 cm  
15'11" x 32'6"



Circle  
Ø 485 cm  
Ø 15'11"



Outdoor  
No

## SPECIFICATIONS



EN 1307 - Class 32

Level of use  
General Commercial Use



EN 13501-1

Fire certification  
B<sub>fl</sub>-s1



Discover more on our website

Made in Belgium  
www.le.be

Showroom and headquarters  
284 Chaussée d'Aelbeke, 7700 Mouscron, Belgium  
T +32 (0)56 843 450

# ALLEGRO LOW

100% wool

## REFERENCES



AECL19892  
Tidal Tan  
Circle



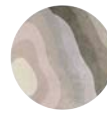
AECL35894  
Honey Pesto  
Circle



AECL41891  
Apricot Brandy  
Circle



AECL32877  
Neutral Gold  
Circle



AECL27893  
Pelican  
Circle



AEOL19892  
Tidal Tan  
Organic 15



AEOL35894  
Honey Pesto  
Organic 15



AEOL41891  
Apricot Brandy  
Organic 15



AEOL32877  
Neutral Gold  
Organic 15



AEOL27893  
Pelican  
Organic 15



AEO7L19892  
Tidal Tan  
Organic 7



AEO7L35894  
Honey Pesto  
Organic 7



AEO7L41891  
Apricot Brandy  
Organic 7



AEO7L32877  
Neutral Gold  
Organic 7



AEO7L27893  
Pelican  
Organic 7



AERL19892  
Tidal Tan  
Rectangle



AERL35894  
Honey Pesto  
Rectangle



AERL41891  
Apricot Brandy  
Rectangle



AERL32877  
Neutral Gold  
Rectangle



AERL27893  
Pelican  
Rectangle

## FINISHING

### Standard

Invisible

## CARE ADVICE

We advise you to vacuum the rug once or twice a week with a normal (upright or cylinder) vacuum cleaner but without the brush or beater bar engaged.

Rugs made from natural materials are subject to some pilling during the first few months. This is a common and normal characteristic of natural cut fibers and will disappear after 3 or 4 months of normal use. A dry environment can result in extra pilling of the yarn. A humidity between 50-70% will benefit the lifecycle of your rug.

In order to avoid 'regular use marks', we advise you to turn the rug every once in a while. Wet stains need to be removed immediately, before the yarn absorbs the fluid. Absorb the stain using a strong absorbing paper (like kitchen paper). Do not, in any case, rub or put pressure on the rug when wet. This can damage the fibers and the structure of the rug. Please do not use highly acidic cleaning agents to remove stains from your rug. This will cause discoloration of the yarn.