



LIMITED EDITION

TECHNICAL DETAILS



Category
Unique



Total weight
5.5 kg/m²
1.13 lb/sq.ft.



Total thickness
23 mm
0.9"



Maximum sizes
485 x 990 cm
15'11" x 32'6"



Circle
Ø 485 cm
Ø 15'11"



Broadloom
Available as broadloom



Outdoor
No

SPECIFICATIONS



EN 1307 - Class 22+

Level of use
General Domestic Use



EN 13501-1

Fire certification
C_{fl}-s1



Discover more on our website

Made in Belgium
www.le.be

Betexco S.R.L.
284 Chaussée d'Aelbeke, 7700 Mouscron, Belgium
T +32 (0)56 843 450

LINEN LUXURY

100% linen

REFERENCES



LX28520
Pristine



LX22649
Antique White



LX32650
Almond Milk



LX38648
Eggnog



LX01945
Rose Cloud



LX54944
Peach Nectar



LX42651
Smoke Beige



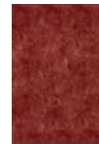
LX46652
Sirocco



LX34659
Pumpkin Spice



LX56653
Bronze Mist



LX21668
Mesarose



LX25656
Sage Green



LX37941
Coriander



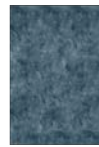
LX35655
Aloe



LX45942
Green Bay



LX10666
Ashley Blue



LX20658
Abyss



LX20665
Oceanview



LX52947
Crystal Gray



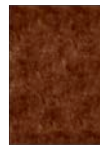
LX23522
Fossil



LX11663
Pale Mauve



LX33662
Burlwood



LX44660
Mocha Bisque



LX53664
Rum Raisin



LX43661
Partridge



LX17521
Oatmeal



LX19517
Light Grey



LX62946
Oyster Gray



LX15657
Eucalyptus



LX59940
Fallen Rock



LX49654
Eiffel Tower

FINISHING

Standard

Invisible

CARE ADVICE

We advise you to vacuum the rug once or twice a week with a normal (upright or cylinder) vacuum cleaner but without the brush or beater bar engaged.

Rugs made from natural materials are subject to some pilling during the first few months. This is a common and normal characteristic of natural cut fibers and will disappear after 3 or 4 months of normal use. A dry environment can result in extra pilling of the yarn. A humidity between 50-70% will benefit the lifecycle of your rug.

In order to avoid 'regular use marks', we advise you to turn the rug every once in a while. Wet stains need to be removed immediately, before the yarn absorbs the fluid. Absorb the stain using a strong absorbing paper (like kitchen paper). Do not, in any case, rub or put pressure on the rug when wet. This can damage the fibers and the structure of the rug. Please do not use highly acidic cleaning agents to remove stains from your rug. This will cause discoloration of the yarn.