

Break

Design by Xuclà & Alemany

Break is distinguished by its architectural attitude. A series of cubic volumes provide indirect downlight while doubling up as a dynamic sculptural presence.

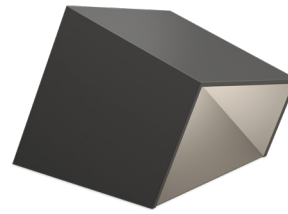
Outdoor



4101
25 x 81 cm

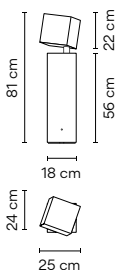


4106
25 x 43 cm



4108
48 x 38 cm

4101



- Finishes**
- 22/ __ Graphite Black (NCS S 8000-N)
 - 80/ __ Concrete (Natural finish)

LED Colour Temperature
/1_ 2700 K - 710 lm
E →
CRI >80

Control
4101 __ / 10 On/ Off

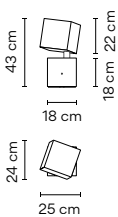
Materials
Body: Steel.
Head: Concrete.
Base: Concrete.
Diffuser: PMMA.

Light Source and electronics
1 x LED 6,2 W 350 mA
Constant Current 350 mA
100~240V 50/60Hz

Packaging
1 Box 0,88 x 0,35 x 0,34 m
Vol 0,1032 m³
Gross weight 38,9 Kg Net weight 35,01 Kg

LED Ⓡ IP66 CE UK ENEC Bi-volt

4106



- Finishes**
- 22/ __ Graphite Black (NCS S 8000-N)
 - 80/ __ Concrete (Natural finish)

LED Colour Temperature
/1_ 2700 K - 710 lm
E →
CRI >80

Control
4106 __ / 10 On/ Off

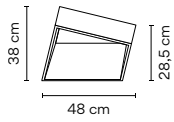
Materials
Head: Concrete.
Base: Concrete.
Diffuser: PMMA.

Light Source and electronics
1 x LED 6,2 W 350 mA
Constant Current 350 mA
100~240V 50/60Hz

Packaging
1 Box 0,88 x 0,35 x 0,34 m
Vol 0,0598 m³
Gross weight 21,5 Kg Net weight 19,35 Kg

LED Ⓡ IP66 CE UK ENEC Bi-volt

4108



Finishes
 ● 22/ _ _ Graphite Black
 (NCS S 8000-N)

LED Colour Temperature
 /1 _ 2700 K - 2500 lm

 CRI >80

Control
 4108 22 / 10 On/ Off

Materials
 Body: Steel.
 Diffuser: PMMA.

Light Source and electronics
 2 x LED Strip 9,2 W 400 mA
 Constant Current 400 mA
 220-240V 50/60Hz

Packaging
 1 Box 0,49 x 0,51 x 0,52 m
 Vol 0,1312 m³
 Gross weight 6,6 Kg Net weight 16 Kg

