



Struttura: interna in metallo verniciato a polveri epossidiche colore Warm Grey.

Rivestimento paralume: la parte esterna è rivestita in tessuto di puro Lino naturale al 100% accoppiato a PVC bianco. Il tessuto viene tinto e sottoposto a trattamento anti-sfilo.

Supporti: in metallo verniciato color Black-nickel lucido. Appoggio a terra tramite piedini in PVC nero opaco.

La lampada da tavolo appoggia esclusivamente su piedini in PVC nero opaco.

Cavo elettrico: rivestito con calza in tessuto poliestere nero.

Interruttore: cablaggio con interruttore ON/OFF.

Structure: epoxy powder-coated metal, Warm Grey colour.

Lampshade: the exterior is covered in 100% pure natural Linen laminated to white PVC. The fabric is dyed and treated to ensure non-peel adherence.

Supports: metal with varnished polished Black-Nickel finish. Feet in matt black PVC.

The table lamp comes only with matt black PVC feet.

Electric cord: covered with a black polyester fabric sleeve.

Switch: wired with ON/OFF switch.

Struktur: Interne Struktur aus mit Epoxidpulver beschichtetem Metall in der Farbe Warm Grey.

Schirm: Die Außenseite ist aus 100% reinem Leinen mit einem weißen PVC-Belag.

Der Stoff wird eingefärbt und gegen Ausfransen behandelt.

Gestelle: Aus glänzend in Black-Nickel lackiertem Metall. Bodenaufgabe mit Füßchen aus matt schwarzem PVC.

Die Tischlampe stützt sich ausschließlich auf die matt schwarzen PVC-Füßchen.

Elektrokabel: Ummantelung aus schwarz Polyester-Stoff.

Schalter: Kabel mit ON/OFF Schalter.

Structure : interne en métal, finition peinture en poudre époxy couleur Warm grey.

Revêtement abat-jour : l'extérieur est recouvert de tissu 100 % lin naturel enduit PVC blanc.

Le tissu est teint et soumis à un traitement anti-effilochage.

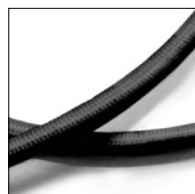
Supports : en métal peint couleur Black-nickel brillant.

Repose sur des pieds en PVC noir mat. La lampe de table repose exclusivement sur des pieds en PVC noir mat.

Fil électrique : recouvert de tissu polyester noir.

Interrupteur : câblage avec interrupteur ON/OFF.

CAVO ELETTRICO, RIVESTITO IN POLIESTERE NERO BLACK POLYESTER COVERED, ELECTRIC CORD



LUNGHEZZA CAVO CORD LENGTH



INTERRUTTORE ON/OFF | ON/OFF SWITCH

LAMPADA DA TAVOLO TABLE LAMP



LAMPADE DA TERRA FLOOR LAMPS



FINITURA PARALUME LAMP SHADE FINISH

TESSUTO FABRIC



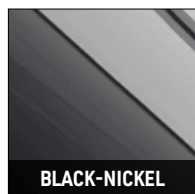
STRUTTURA INTERNA INTERNAL STRUCTURE

METALLO METAL



FINITURA SUPPORTI SUPPORTS FINISH

METALLO METAL



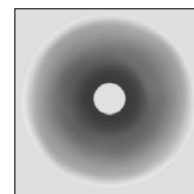
FINITURA PIEDINI FEET FINISH

PVC



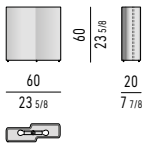
EMISSIONE LUMINOSA LIGHT OUTPUT

DIFFUSA DIFFUSE

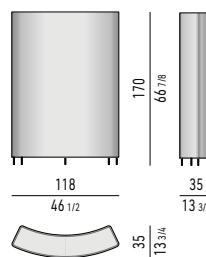
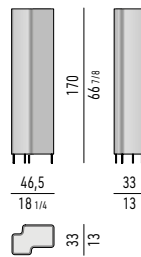
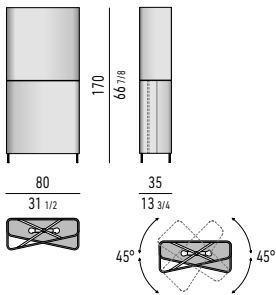
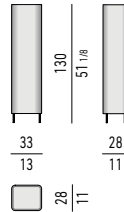
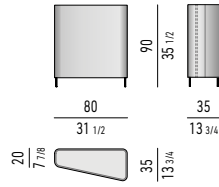
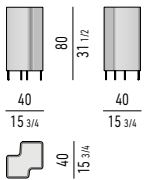


SOLO LAMPADA DA TERRA
FOR FLOOR LAMP ONLY

LAMPADA DA TAVOLO | TABLE LAMP



LAMPADE DA TERRA | FLOOR LAMPS



ROTAZIONE PARALUME SUPERIORE DI 45°
UPPER LAMPSHADE ROTATION OF 45°

LAMPADINE

Lampada da tavolo cm 60x20 H60
4xMax.20W - LED
E12 (100-120V) \ E14 (220-240V)

Lampada da terra cm 40x40 H80
4xMax.20W - LED
E26 (100-120V) \ E27 (220-240V)

Lampada da terra cm 80x35 H90
4xMax.20W - LED
E26 (100-120V) \ E27 (220-240V)

Lampada da terra cm 33x28 H130
6xMax.20W - LED
E26 (100-120V) \ E27 (220-240V)

Lampada da terra cm 80x35 H170
8xMax.20W - LED
E26 (100-120V) \ E27 (220-240V)

Lampada da terra cm 46,5x33 H170
8xMax.20W - LED
E26 (100-120V) \ E27 (220-240V)

Lampada da terra cm 118x35 H170
16xMax.20W - LED
E26 (100-120V) \ E27 (220-240V)

ATTENZIONE: per ridurre il rischio di surriscaldamento, attenersi alle indicazioni riportate sopra.

LIGHT BULBS

Table lamp cm 60x20 H60
4x Max. 20W - LED
E12 (100-120V) \ E14 (220-240V)

Floor lamp cm 40x40 H80
4x Max. 20W - LED
E26 (100-120V) \ E27 (220-240V)

Floor lamp cm 80x35 H90
4x Max. 20W - LED
E26 (100-120V) \ E27 (220-240V)

Floor lamp cm 33x28 H130
6x Max. 20W - LED
E26 (100-120V) \ E27 (220-240V)

Floor lamp cm 80x35 H170
8x Max. 20W - LED
E26 (100-120V) \ E27 (220-240V)

Floor lamp cm 46,5x33 H170
8x Max. 20W - LED
E26 (100-120V) \ E27 (220-240V)

Floor lamp cm 118x35 H170
16x Max. 20W - LED
E26 (100-120V) \ E27 (220-240V)

CAUTION: to limit the risk of overheating, please follow the instructions indicated above.

LEUCHTMITTEL

Tischlampe cm 60x20 H60
4xMax.20W - LED-Lampen
E12 (100-120V) \ E14 (220-240V)

Bodenleuchte cm 40x40 H80
4xMax.20W - LED-Lampen
E26 (100-120V) \ E27 (220-240V)

Bodenleuchte cm 80x35 H90
4xMax.20W - LED-Lampen
E26 (100-120V) \ E27 (220-240V)

Bodenleuchte cm 33x28 H130
6xMax.20W - LED-Lampen
E26 (100-120V) \ E27 (220-240V)

Bodenleuchte cm 80x35 H170
8xMax.20W - LED-Lampen
E26 (100-120V) \ E27 (220-240V)

Bodenleuchte cm 46,5x33 H170
8xMax.20W - LED-Lampen
E26 (100-120V) \ E27 (220-240V)

Bodenleuchte cm 118x35 H170
16xMax.20W - LED-Lampen
E26 (100-120V) \ E27 (220-240V)

ACHTUNG: Um das Risiko der Überhitzung zu vermindern, die oben genannten Anweisungen einhalten.

AMPOULES

Lampe de table cm 60x20 H60
4xMax 20W - LED
E12 (100-120V) \ E14 (220-240V)

Lampadaire cm 40x40 H80
4xMax 20W - LED
E26 (100-120V) \ E27 (220-240V)

Lampadaire cm 80x35 H90
4xMax 20W - LED
E26 (100-120V) \ E27 (220-240V)

Lampadaire cm 33x28 H130
6xMax 20W - LED
E26 (100-120V) \ E27 (220-240V)

Lampadaire cm 80x35 H170
8xMax 20W - LED
E26 (100-120V) \ E27 (220-240V)

Lampadaire cm 46,5x33 H170
8xMax 20W - LED
E26 (100-120V) \ E27 (220-240V)

Lampadaire cm 118x35 H170
16xMax 20W - LED
E26 (100-120V) \ E27 (220-240V)

ATTENTION : afin de prévenir tout risque de surchauffe, suivre les indications ci-dessus.